

## **RENT OUR CONFERENCE CENTER**

### **Special offer for companies and institutions**

Our modern Conference Center is located in the representative complex of Copernicus Science Center with its interesting architecture, right in the city center, by the river, in the Varsovian district of Powiśle. The building is surrounded by green areas and it neighbors with the Planetarium, Contemporary Art Museum, Elektrownia Powiśle Shopping Center and Vistula Boulevards.



The Center has two stories that can be arranged to your liking. Its halls are equipped with modern conference equipment. The meetings are supervised by our professional personnel which has already been praised by prominent guest like Francois Hollande (president of France), Jane Goodall (primatologist) Keith Campbell (creator of Dolly the sheep) and many other important personalities.



## Lobby

Guests can get inside the Conference Center through the main entrance of the CSC building. It would be impossible to miss it. Guests find themselves inside the conference room as soon as they walk through the door. At their disposal is a spacy hall, a large reception and a changing room. The lobby also has a direct access to the auditorium hall and foyer. The elevators and the staircase lead to the glass conference room at the 1st floor which can be adjusted to your liking by moving its walls and blinds.



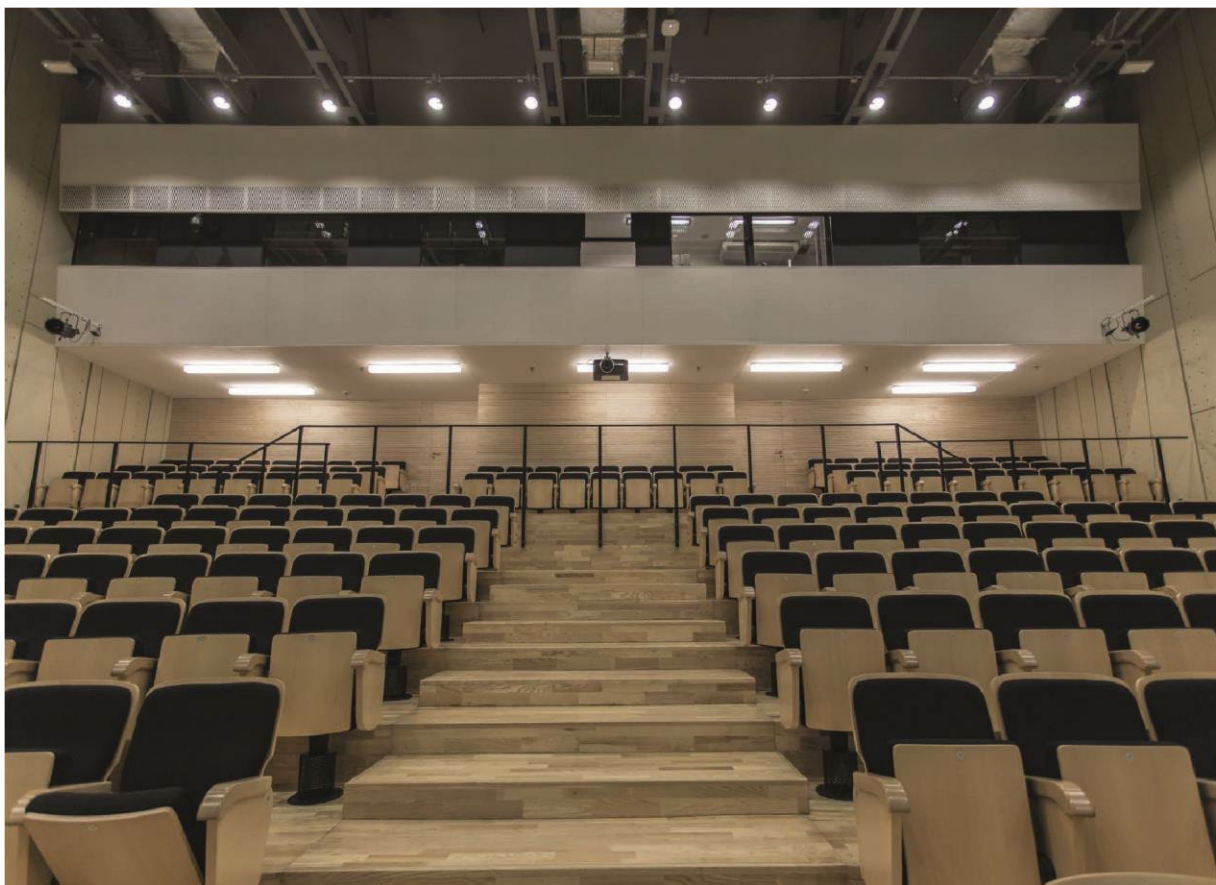
## Auditorium room

**Area:** 455 m<sup>2</sup>

**Capacity:** 280 people

**Accessories:** 280 upholstered chairs, large screen (6,5 x 3,66 m), multimedia projector, lighting, sound system, a lectern with microphone, 8 wireless microphones, tables, 2 booths for simultaneous translation and sets of headphones, air conditioning.

The renting price includes the cost of using accessories and access to our technical support.



## Foyer room

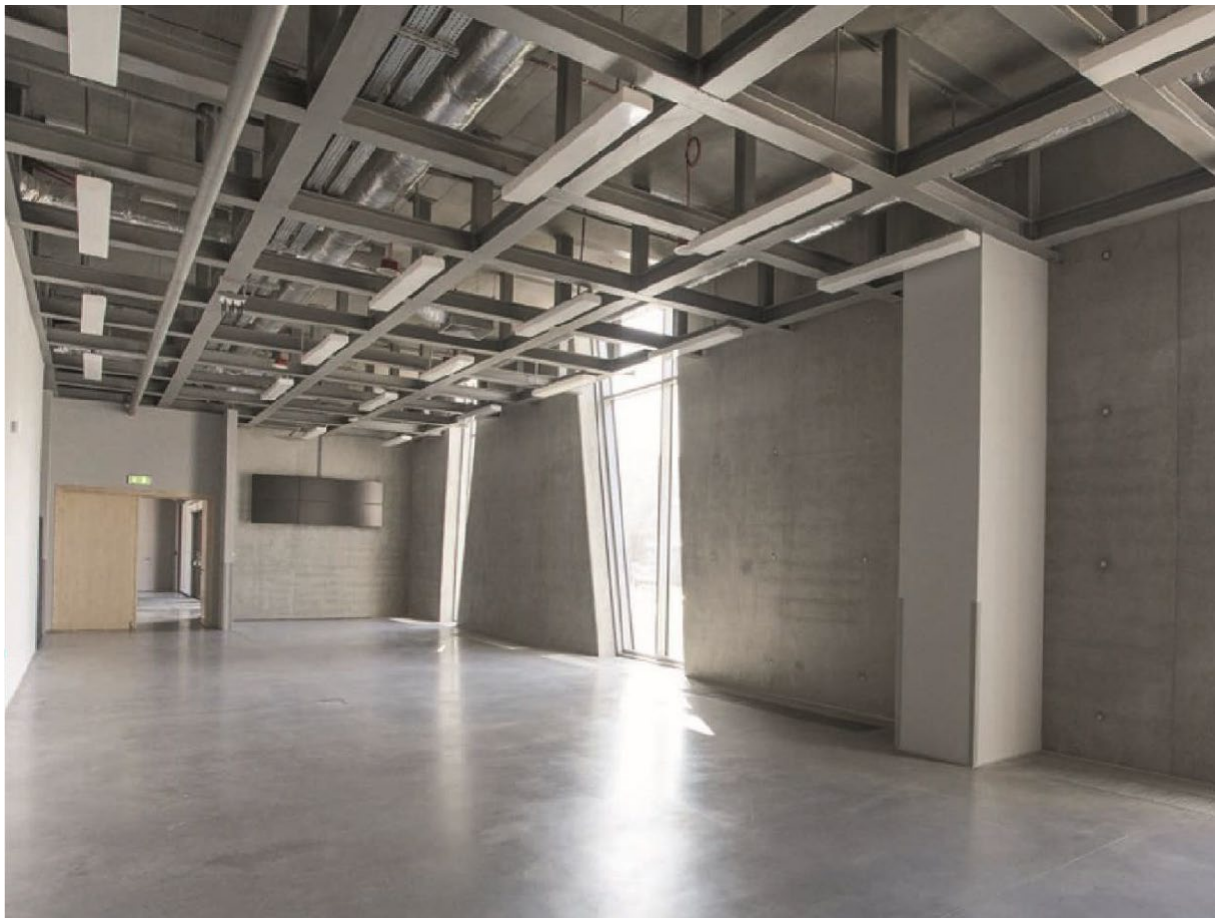
**Area:** 140 m<sup>2</sup>

**Capacity:** 60 (cinema-like layout)

**Accessories:** multimedia projector, screen (4 x 2,25 meters), ceiling sound system, tables, chairs, 2 wireless microphones, air conditioning.

The renting price includes the cost of using accessories and access to our technical support.

This location boasts huge windows with roller blinds. It's a perfect choice for workshops, exhibitions or serving catering food.



## Conference Room

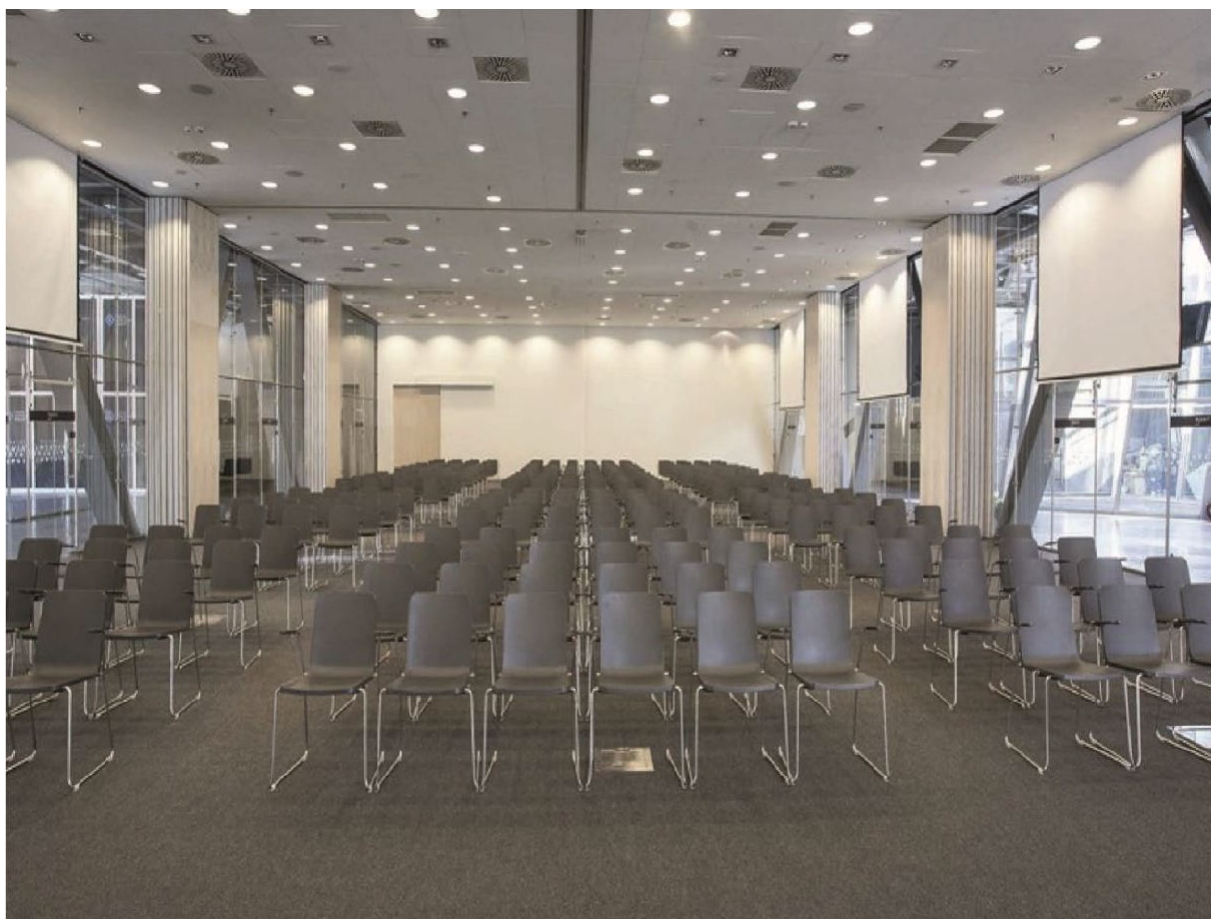
**Area:** 440 m<sup>2</sup>

**Capacity:** 360 people (Cinema-like layout).

**Accessories:** chairs, 7 screens and multimedia projectors, conference lighting, ceiling sound system with 6 wireless microphones, air conditioning.

The renting price includes the cost of using accessories and access to our technical support.

Sliding walls allow renters to divide the space into (maximum 6) smaller rooms of various square metrage. It can be rented in full or in fragments.



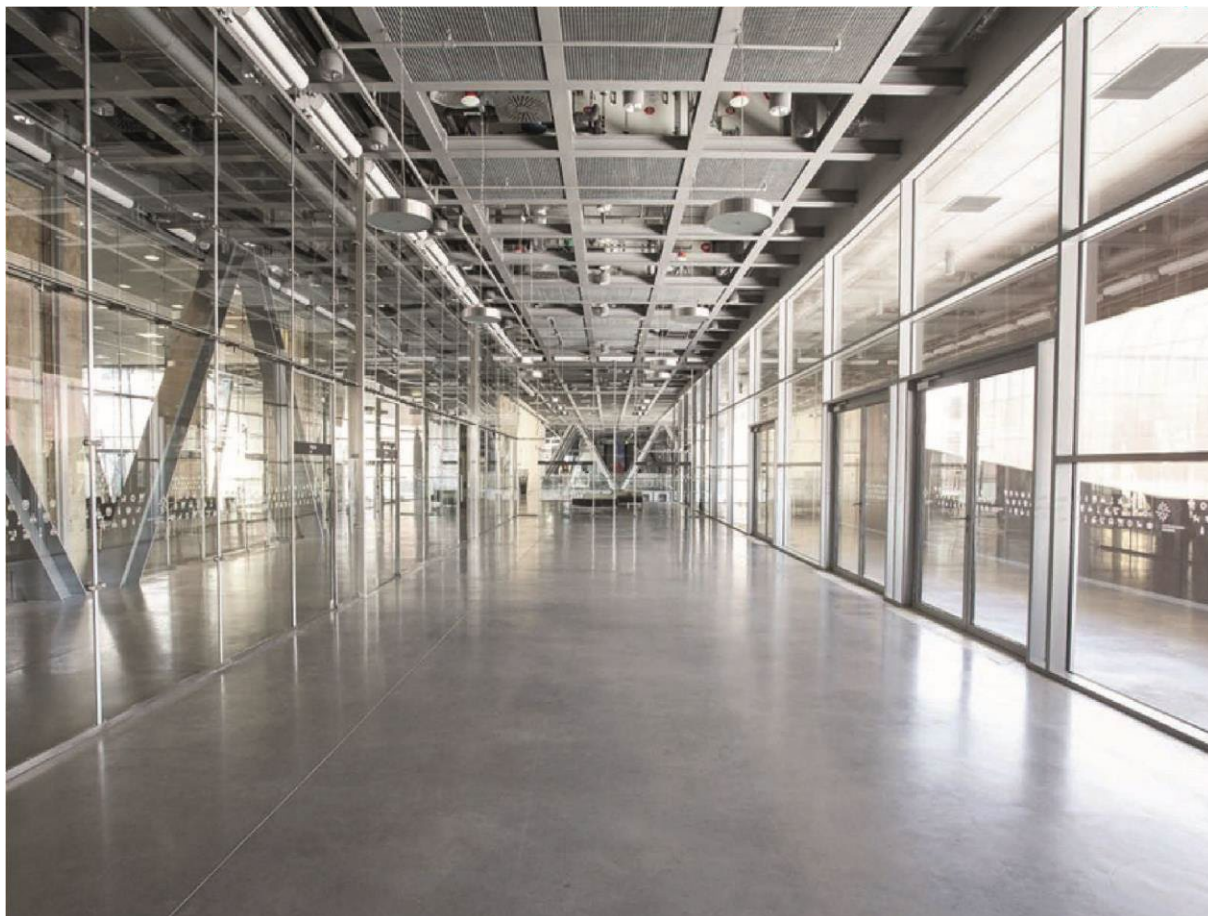
## Coffee House with supply base for catering

**Area:** 200 m<sup>2</sup>

**Capacity:** 80-100 people (depends on the amount of catering equipment).

Ideal for coffee breaks, lunch, banquets or exhibitions.

The coffee house neighbors with a covered terrace with a view on Vistula (available upon request), Świętokrzyski bridge and the National Stadium.



Price for a day:

Area	from 7.00 AM to 7.00 PM	Price for an additional hour
Auditorium room	12 000 zł	1 000 zł
Auditorium room with foyer	15 000 zł	1 000 zł
Coffee house 200 m <sup>2</sup> – rented on its own	9 000 zł	900 zł
Coffee house – rented together with the conference room	6 000 zł	600 zł
Conference room 440 m <sup>2</sup>	14 000 zł	1 000 zł
Conference room 330 m <sup>2</sup>	11 500 zł	1 000 zł
Conference room 220 m <sup>2</sup>	8 500 zł	850 zł
Conference room 110 m <sup>2</sup>	6 000 zł	600 zł
Foyer room 135 m <sup>2</sup>	3 000 zł	300 zł
VIP room	1 500 zł	150 zł
1st floor hall next to the conference room	2 500 zł	for all day
1st floor hall behind the lifts	1 500 zł	for all day
Room next to the cloakroom	350 zł	for all day
Cloakroom	220 zł	for all day

1. Each new hour before 7:00 AM and after 7:00 PM is subject to additional payment in accordance to the list below.
2. Renting room for a few hours does not affect the price.
3. Renting rooms for editing between 7:00 AM and 7:00 PM costs 75% of their net price.



## Contact info:

Copernicus Science Center  
Wybrzeże Kościuszkowskie 20 street  
00-390 Warszawa

Anna Jasińska tel. 516 16 92 56  
[anna.jasinska@kopernik.org.pl](mailto:anna.jasinska@kopernik.org.pl)

Anna Paterek tel. 512 90 67 65  
[anna.paterek@kopernik.org.pl](mailto:anna.paterek@kopernik.org.pl)

